

“DA” 双动气动执行器（ 不锈钢 CF8M 铸造 ）
Double acting pneumatic actuator “DA” type INOX PRECISION CASTING CF8M



技术特点

扭矩：15Nm—480Nm
安装法兰符合 DIN/ISO 5211 DIN 3337; F03 - F05 - F07 - F10 标准
旋转角度 90°
扭矩与气源压力成正比（见表—气动执行器 DA 总表）。
字母 DA 后的代码始终对应 5.6bar 气源压力下的输出扭矩。
从 DA60 起可直接与 NAMUR 电磁阀连接。
尺寸 DA15—DA30 可与 NAMUR 板连接。
符合 ATEX 指令 94/9/EC，ATEX 规格请在代码末尾添加 YX。

Technical features

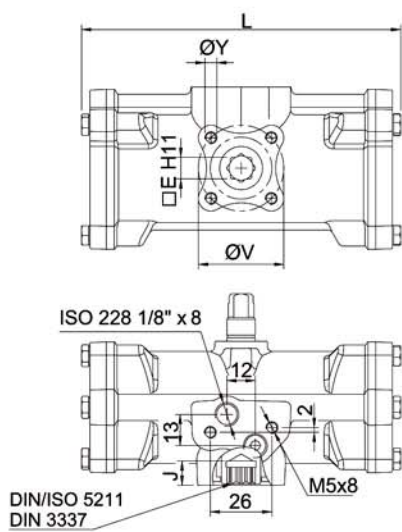
Torque from 15 Nm to 480 Nm.
Mounting flange according to DIN/ISO 5211 DIN 3337; F03 - F05 - F07 - F10
VDI/VDE 3845 connection for accessories.
Rotation angle 90°
Torque: directly proportional to the air supply (see table - general catalogue pneumatic actuator DA).
The code numbers after the DA letters, always correspond to the breakaway torque in Nm by 5,6 bar air supply.
Sizes from DA 60 direct connection with NAMUR solenoid valve.
Sizes DA15 - DA30 can be provided with NAMUR plate on request.
ATEX version in conformity with directive 94/9/EC. Please add YX at the end of the code for ATEX version.

工作条件

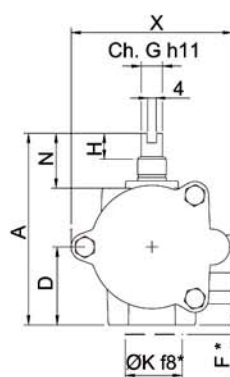
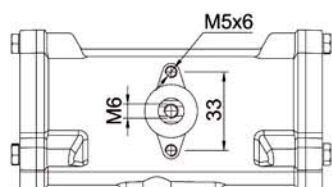
温度：-20°C ~ +80°C。
气源压力：5.6bar：最大 8.4bar。
工作介质：在润滑空气情况下，不得使用洗涤剂油或与 NBR 相溶的润滑油。

尺寸表

订货号	DA015516S	DA030516S	DA060516S	DA120516S	DA240516S	DA480516S
密封备件	KGXI0112	KGXI0114	KGXI0116	KGXI0118	KGXI0120	KGXI0122
规格	DA 15 F03	DA 30 F03	DA 60 F03-F05	DA 120 F05-F07	DA 240 F05-F07	DA 480 F07-F10
L	mm. 120	134.6	158.4	192.9	246.8	298.4
A	mm. 72.4	80.4	92.5	116.5	136.4	160
D	mm. 28.2	32.7	37.7	46.2	56.2	68
E	mm. 9	9	11	14	17	22
F	mm. 2	2	2	3	3	3
G	mm. 8	9	10	12	15	19
H	mm. 10	10	13	13	17	19
N	mm. 23	23	20	30	30	30
X	mm. 59	68	80.3	94.4	117	139.7
J	mm. 10.2	10.2	12.2	16.3	19.3	24.3
øK	mm. 25	25	25	35	35	55
Q	mm. 50	50	50	80	80	80
P	mm. 25	25	25	30	30	30
øU	mm. -	-	50	70	70	102
øV	mm. 36	36	36	5	50	70
øy x 深.	mm. M 5x9	M 5x9	M 5x9	M 6x11	M 6x11	M 8x13
øw x 深.	mm. -	-	M 6x11	M 8x15	M 8x13	M 10x22
耗气量 dm³/cycle	mm. 0.079	0.148	0.28	0.59	1.18	2.38
重量	Kg. 0.8	1.2	1.8	3.3	5.6	9.5



DIN/ISO 5211
DIN 3337

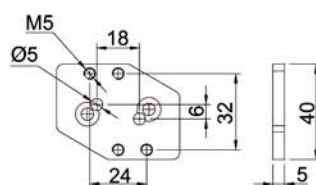


DA 15 - DA 30

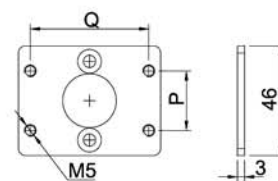
可互换定心环
*Interchangeable centering ring

接口为 NAMUR 连接
NAMUR interface on request

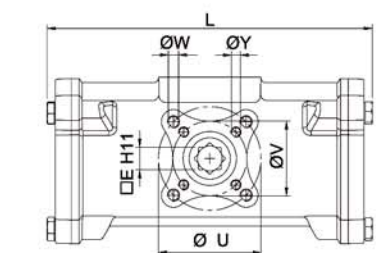
接口根据 VDI/VDE 3845 要求
Interface according to VDI/VDE 3845 on request



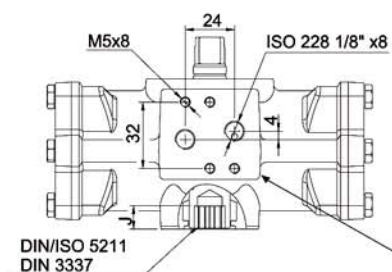
可选代码 KBNI4015
Optional Code KBNI4015



可选代码 KBVI4015
Optional Code KBVI4015

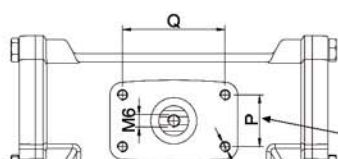


DA 60 - DA 480

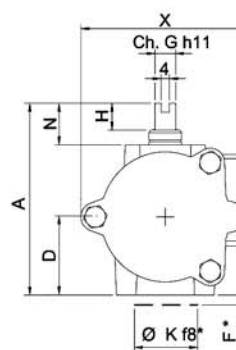


DIN/ISO 5211
DIN 3337

NAMUR 连接
NAMUR pad



VDI/VDE 3845 连接
Connection to VDI/VDE 3845



可互换定心环 (根据要求)
*Interchangeable centering ring
(on request)